



Installation Instructions
MS149-11 '63-'65 Nova Trunk Hinges

1. Please read all of the instructions thoroughly before beginning the installation. If you do not feel that you have the mechanical aptitude to complete the job in a safe manner, Eddie Motorsports strongly recommends that you employ the services of a knowledgeable technician to perform the installation.

Before beginning the installation, take note of your trunk lid's fit and finish. Pay close attention to the width of the seams, alignment of the trunk lid to the fenders, etc. This will help in the final adjustment of the trunk lid. We recommend that you use painter's tape to mask off the edges of your trunk lid and fenders to protect your paint. Also, place a blanket or towels over the back cowl as the stock hinges can swing up and contact your car when the trunk lid is removed. **NOTE:** Do not attempt the installation alone. There are several steps in the installation process that require two people to complete safely.

2. Mark the position of the stock hinges on the trunk lid and remove the four bolts holding it to the hinges. Remove the trunk lid and place it in a safe place.

3. Using a large screw driver or small bar, twist the "hooked" end of the torsion bar away from the slots on the torsion rod bracket (figure 1). Once you have the end of each rod disconnected, you can remove the bars by twisting and pulling them through the brackets on the opposite ends.

4. Mark the position of the torsion rod bracket and remove it by unscrewing the two fasteners (figure 2).

5. Locate the hinge rivet on the back side of the bracket you removed (figure 3).

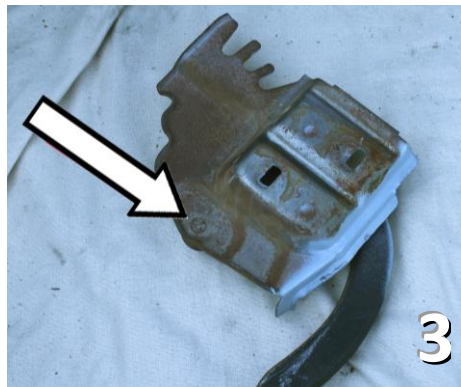
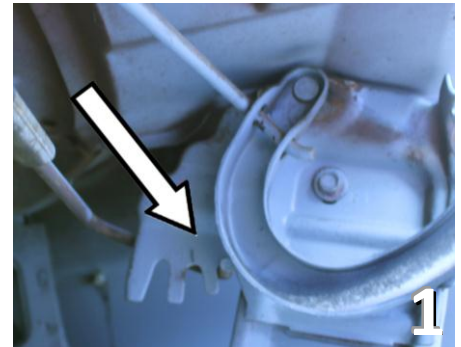
6. Use a Dremel or die grinder to grind off the head. Remove only the material necessary, being careful to grind the rivet only and do not elongate the hole.

7. Support the hinge and separate it from the bracket (figure 4).

8. Apply anti-seize to the threads and install the new 3/8" stainless steel hinge pin pointing towards the inside of the trunk. Fasten on the back side with a 3/8" nut and lock washer (figure 5). Re-install the bracket in car.

9. Cut out and attach the drill templates supplied with the kit to the torsion rod bracket and use a center punch to mark the hole locations. Using a 21/64 bit, drill the mounting holes (figure 6).

10. Using flat washers on each side of the aluminum strut bracket, attach it to the torsion rod bracket using the supplied stainless steel button head bolts and locknuts (figure 7) with the ball stud facing the inside of the trunk. Apply anti-seize to the threads.



11. Identify the correct trunk hinge and install them onto the stainless steel mounting stud with the ball stud facing the inside of the trunk. Apply anti-seize to the threads and fasten with a 3/8 flat washer and lock nut.

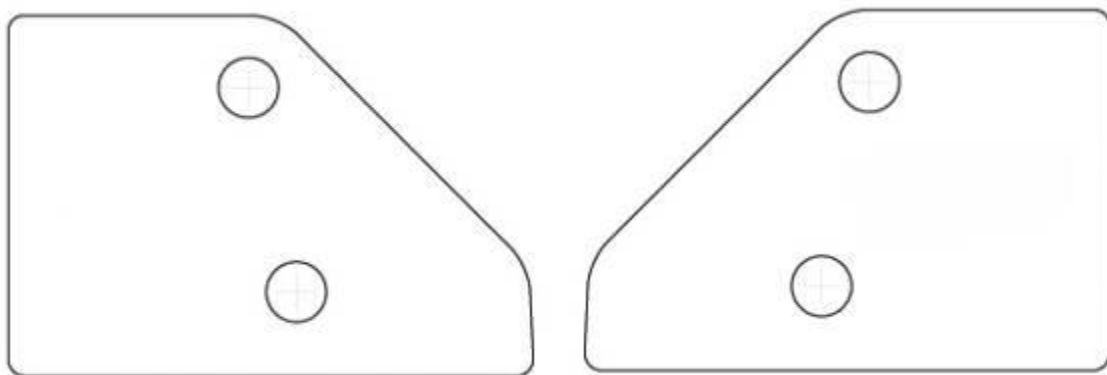
12. Reinstall the trunk lid, attaching the hinge to the lid with the supplied stainless steel button head bolts, washers and aluminum washers.

13. Realign the trunk lid on the car as necessary using your markings as a guide. Once you are satisfied with the fit, remove fasteners one at a time, apply Loctite and securely tighten.

NOTE: Due to the lack of quality control by auto manufacturers in the 1960's-1970's, the position of the torsion rod mounts may vary from car to car. If you cannot get your trunk lid to line up to your satisfaction, it may be necessary to modify the mounting holes in the brackets and/or hinges to gain extra adjustment.

14. Remove the retaining clips from the gas strut sockets and set them aside.

15. Snap the struts onto the ball studs with the body side attached to the hinge and replace the strut retaining clips (figure 8).



EDDIE MOTORSPORTS IS NOT RESPONSIBLE FOR THE INSTALLATION OF HINGES ON APPLICATIONS OUTSIDE THE SPECIFIC YEAR AND MODEL OF THEIR INTENDED USE. CONTACT US WITH ANY QUESTIONS 888-813-1293 or sales@eddiemotorsports.com www.eddiemotorsports.com